



BLUECREST
HOMES

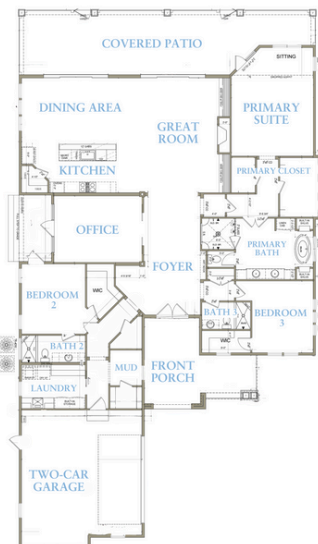


KEY BISCAYNE

BASE PLAN STARTING AT:

3 BED | 3 FULL BATH | 3,030 SQ. FT.

Overall Home Dimensions: 55" Wide x 100" Deep (including porches, & deck stairs)



Plan Features

- Single-Story Home
- 2-Car Garage
- Rear Covered Porch
- Front Covered Porch
- Study
- Open Layout

PRICE:
\$939,000

Price reflects the maximum heated square footage for the plan and includes the cost of any room addition options shown

Learn More
about this plan
here:



KEYS COLLECTION

Square footage, options, and plan configurations may vary per project and are subject to change. Renderings and floorplans are artist's concepts and are subject to change.