



BLUECREST
HOMES



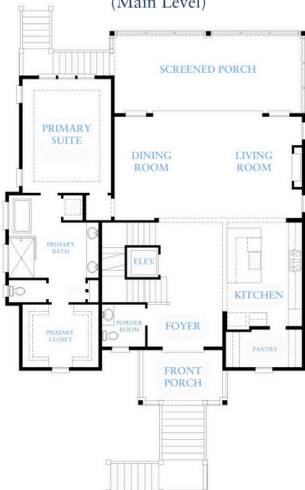
TOPSAIL ISLAND

BASE PLAN STARTING AT:

3 BED | 4 FULL BATH | 1 HALF BATH | 3,322 SQ. FT.

Overall Home Dimensions: 42' Wide x 54'-8" Deep (including porches, & deck stairs)

FIRST FLOOR
(Main Level)



SECOND FLOOR
(Top Level)



Plan Features

- 3-Level Home
- 2-Car Garage
- Interior Elevator
- Breezeway
- Rear Covered Patio
- First-Floor Primary Suite
- Rear Covered Porches
- Second Level Study
- Front Covered Porch

PRICE:

\$1,241,327

Price reflects the maximum heated square footage for the plan and includes the cost of any room addition options shown

Learn More
about this plan
here:



COASTAL CAROLINA COLLECTION

Square footage, options, and plan configurations may vary per project and are subject to change. Renderings and floorplans are artist's concepts and are subject to change.