



BLUECREST
HOMES



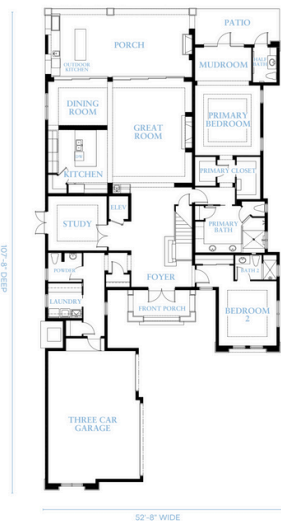
SAGO

BASE PLAN STARTING AT:

4 BED | 4 FULL BATH | 2 HALF BATH | 3,896 SQ. FT.

Overall Home Dimensions: 52'-8" Wide x 104' Deep (including porches, & deck stairs)

FIRST FLOOR



SECOND FLOOR



Plan Features

- 2-Level Home
- 3-Car Garage
- Interior Elevator
- First-Level Study
- Outdoor Kitchen
- Rear Covered Porch
- Front Covered Porch
- Rear Patio
- First-Floor Primary Suite

PRICE:
\$1,159,840

Price reflects the maximum heated square footage for the plan and includes the cost of any room addition options shown

Learn More
about this plan
here:



FLORIDA PALMS COLLECTION

Square footage, options, and plan configurations may vary per project and are subject to change. Renderings and floorplans are artist's concepts and are subject to change.