



BLUECREST  
HOMES



# BUOY

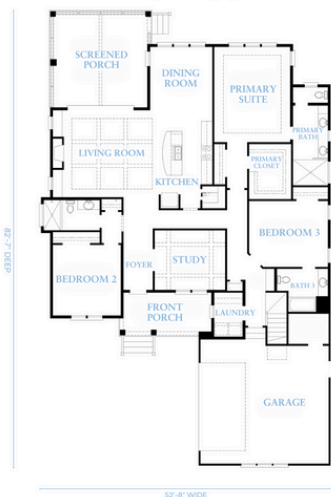
BASE PLAN STARTING AT:

**3 BED | 3 FULL BATH | 1 HALF BATH | 2,649 SQ. FT.**

2,649 SQ. FT. w/ opt. Second Floor bonus

Overall Home Dimensions: 52'-8" Wide x 84'-5" Deep (including porches, & deck stairs)

FIRST FLOOR



SECOND FLOOR



### Plan Features

- 1-Level Home
- Opt. 2nd-Level Flex/Bonus
- Bonus Room
- First-Floor Office
- Rear Screened Porch
- Front Covered Porch
- First Floor Primary Suite

PRICE:

**\$837,945**

*Price reflects the maximum heated square footage for the plan and includes the cost of any room addition options shown*

Learn More  
about this plan  
here:



NAUTICAL COLLECTION

Square footage, options, and plan configurations may vary per project and are subject to change. Renderings and floorplans are artist's concepts and are subject to change.