



BLUECREST  
HOMES

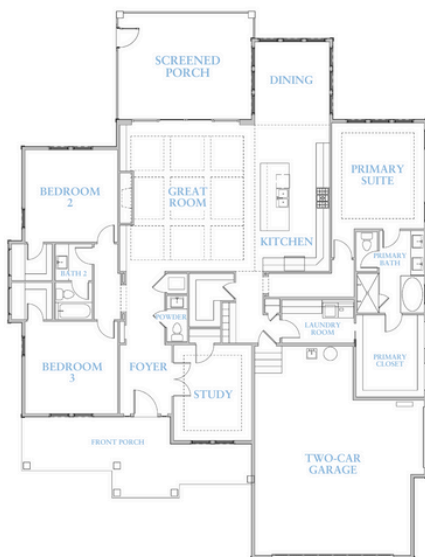


# JUNIPER

BASE PLAN STARTING AT:

**3 BED | 2 FULL BATH | 1 HALF BATH | 2,623 SQ. FT.**

Overall Home Dimensions: 60' Wide x 77' Deep (including porches, & deck stairs)



### *Plan Features*

- 1-Level Home
- 2-Car Garage
- Rear Screened Porch
- Rear Patio
- Front Covered Porch
- Dedicated Study
- Open Main Living Area Layout

PRICE:

**\$885,035**

Price reflects the maximum heated square footage for the plan and includes the cost of any room addition options shown

Learn More  
about this plan  
here:



Square footage, options, and plan configurations may vary per project and are subject to change. Renderings and floorplans are artist's concepts and are subject to change.