



BLUECREST
HOMES

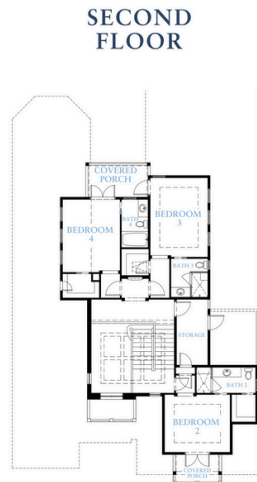
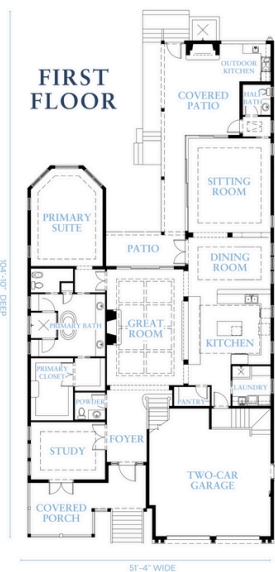


TORTUGA

BASE PLAN STARTING AT:

4 BED | 4 FULL BATH | 2 HALF BATH | 4,367 SQ. FT.

Overall Home Dimensions: 55' Wide x 107' Deep (including porches, & deck stairs)



Plan Features

- 2-Level Home
- 2-Car Garage
- Bonus Room
- Main Level Study
- Rear Covered Balcony
- Outdoor Fireplace
- Rear Covered Patio
- Front Covered Balcony
- First Floor Primary Suite
- Front Covered Porch
- Outdoor Kitchen
- Open First Floor Layout

PRICE:
\$1,237,584

Price reflects the maximum heated square footage for the plan and includes the cost of any room addition options shown

Learn More
about this plan
here:



KEYS COLLECTION

Square footage, options, and plan configurations may vary per project and are subject to change. Renderings and floorplans are artist's concepts and are subject to change.