



BLUECREST



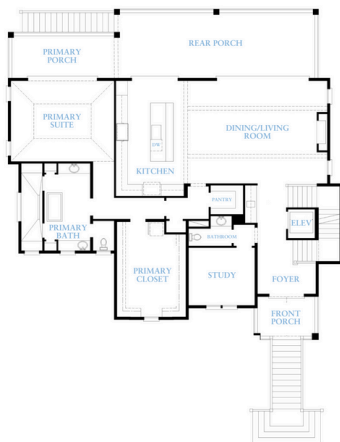
# MASONBORO ISLAND

BASE PLAN STARTING AT:

**4 BED | 3 BATH | 1 HALF BATH | 3,880 SQ. FT.**

Overall Home Dimensions: 58-4" Wide x 57-6" Deep (including porches, & deck stairs)

**FIRST FLOOR**  
(Main Level)



**SECOND FLOOR**  
(Top Level)



### *Plan Features*

- 3-Level Home
- 3-Car Garage
- Interior Elevator
- Rear Covered Porches
- Front Covered Porch
- Outdoor Shower
- Recreation Room
- Main-Level Study
- Main-Level Primary Suite
- Open Layout Main Living

PRICE:

**\$1,414,919**

Price reflects the maximum heated square footage for the plan and includes the cost of any room addition options shown

Learn More  
about this plan  
here:



COASTAL CAROLINA COLLECTION

Square footage, options, and plan configurations may vary per project and are subject to change. Renderings and floorplans are artist's concepts and are subject to change.