



BLUECREST  
HOMES

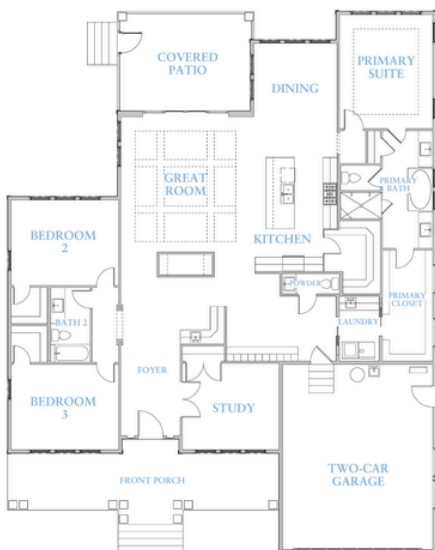


# HAVEN

BASE PLAN STARTING AT:

**3 BED | 2 FULL BATH | 1 HALF BATH | 2,727 SQ. FT.**

Overall Home Dimensions: 60' Wide x 76' Deep (including porches, & deck stairs)



### *Plan Features*

- 1-Level Home
- 2-Car Garage
- Dedicated Study
- Front Covered Porch
- Rear Screened Porch
- Open Main Living Area Layout

**PRICE:**  
**\$903,120**

Price reflects the maximum heated square footage for the plan and includes the cost of any room addition options shown

Learn More  
about this plan  
here:



TIDAL COLLECTION

Square footage, options, and plan configurations may vary per project and are subject to change. Renderings and floorplans are artist's concepts and are subject to change.