



BLUECREST
HOMES



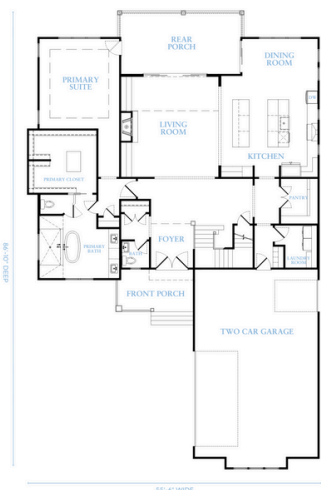
SAILFISH

BASE PLAN STARTING AT:

4 BED | 4 FULL BATH | 1 HALF BATH | 4,249 SQ. FT.

Overall Home Dimensions: 55'-6" Wide x 86'-10" Deep (including porches, & deck stairs)

FIRST FLOOR



SECOND FLOOR



Plan Features

- 2-Level Home
- 2-Car Garage
- Rear Covered Porches
- Front Covered Porch
- First-Floor Primary Suite
- Open First Floor Layout
- Second Floor Study

PRICE:
\$1,179,324

Price reflects the maximum heated square footage for the plan and includes the cost of any room addition options shown

Learn More
about this plan
here:



ANGLER COLLECTION

Square footage, options, and plan configurations may vary per project and are subject to change. Renderings and floorplans are artist's concepts and are subject to change.