



BLUECREST  
HOMES



# ANCHOR

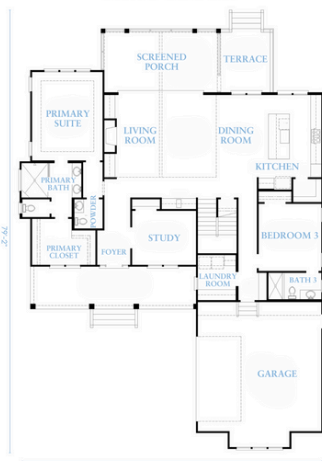
BASE PLAN STARTING AT:

**3 BED | 3 FULL BATH | 1 HALF BATH | 2,461 SQ. FT.**

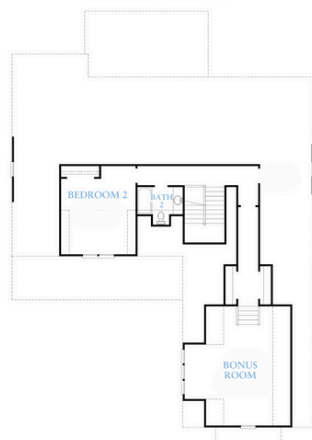
2,944 SQ. FT. w/ opt. bonus

Overall Home Dimensions: 57'-4" Wide x 79'-2" Deep (including porches, & deck stairs)

FIRST FLOOR



SECOND FLOOR



### Plan Features

- 2-Level Home
- 2-Car Garage
- Bonus Room
- First-Floor Office
- First Floor Primary Suite
- Open First-Floor Layout
- Rear Covered Patio
- Rear Covered Porch

PRICE:

**\$883,760**

*Price reflects the maximum heated square footage for the plan and includes the cost of any room addition options shown*

Learn More  
about this plan  
here:



NAUTICAL COLLECTION

Square footage, options, and plan configurations may vary per project and are subject to change. Renderings and floorplans are artist's concepts and are subject to change.