



BLUECREST
HOMES



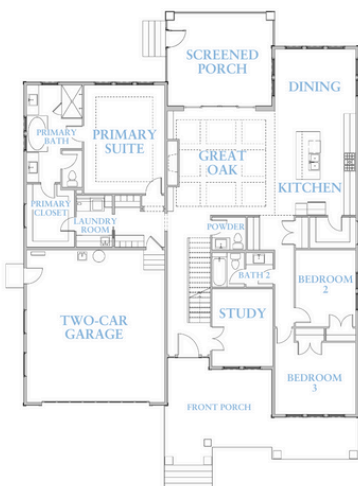
PINEVIEW

BASE PLAN STARTING AT:

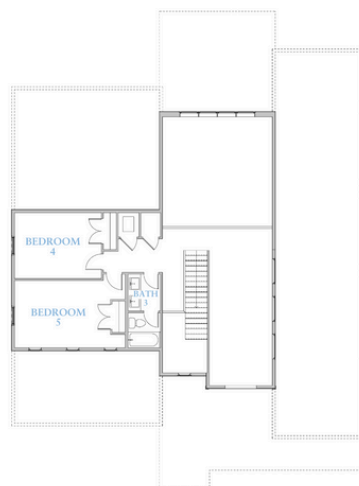
5 BED | 3 FULL BATH | 1 HALF BATH | 3,299 SQ. FT.

Overall Home Dimensions: 60' Wide x 77' Deep (including porches, & deck stairs)

FIRST FLOOR



SECOND FLOOR



Plan Features

- 2-Level Home
- 2-Car Garage
- Rear Screened Porch
- Rear Patio
- First Level Primary Suite
- Front Covered Porch
- First Level Study
- Open Main Living Area Layout

PRICE:

\$1,129,543

Price reflects the maximum heated square footage for the plan and includes the cost of any room addition options shown

Learn More
about this plan
here:



Square footage, options, and plan configurations may vary per project and are subject to change. Renderings and floorplans are artist's concepts and are subject to change.