



BLUECREST  
HOMES

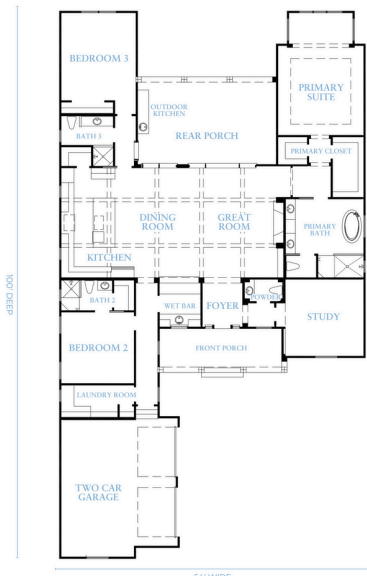


# EMERALD

BASE PLAN STARTING AT:

**3 BED | 3 FULL BATH | 1 HALF BATH | 2,891 SQ. FT.**

Overall Home Dimensions: 56' Wide x 100' Deep (including porches, & deck stairs)



### Plan Features

- Single Story Home
- Front Covered Porch
- Rear Patio
- Study
- Open Layout
- 2-Car Garage
- Outdoor Kitchen

PRICE:  
**\$976,221**

*Price reflects the maximum heated square footage for the plan and includes the cost of any room addition options shown*

Learn More  
about this plan  
here:



KEYS COLLECTION

Square footage, options, and plan configurations may vary per project and are subject to change. Renderings and floorplans are artist's concepts and are subject to change.