



BLUECREST
HOMES

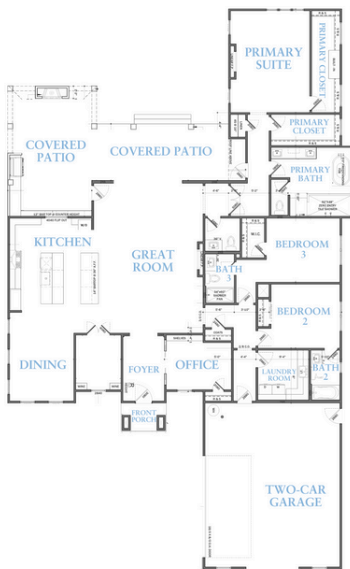


BISMARCK

BASE PLAN STARTING AT:

3 BED | 3 FULL BATH | 1 HALF BATH | 2,800 SQ. FT.

Overall Home Dimensions: 61' Wide x 100' Deep (including porches, & deck stairs)



Plan Features

- 1-Level Home
- 3-Car Garage
- Study
- Rear Covered Porch
- Front Covered Porch
- Open Layout

PRICE:
\$920,500

Price reflects the maximum heated square footage for the plan and includes the cost of any room addition options shown

Learn More
about this plan
here:



FLORIDA PALMS COLLECTION

Square footage, options, and plan configurations may vary per project and are subject to change. Renderings and floorplans are artist's concepts and are subject to change.