



BLUECREST
HOMES



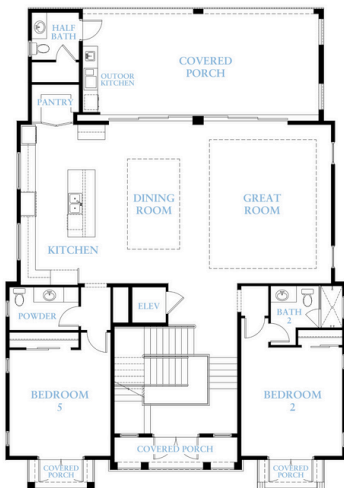
LEEWARD

BASE PLAN STARTING AT:

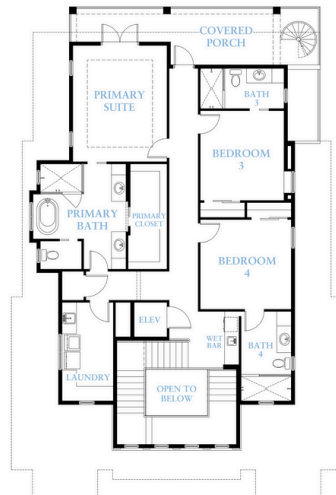
5 BED | 4 FULL BATH | 2 HALF BATH | 4,161 SQ. FT.

Overall Home Dimensions: 45'-8" Wide x 79'-7" Deep (including porches, & deck stairs)

FIRST FLOOR (Main Level)



SECOND FLOOR (Top Level)



Plan Features

- 3-Level Home
- 4-Car Garage
- Interior Elevator
- Rear Covered Porches
- Front Covered Porches
- Outdoor Kitchen

PRICE:
\$1,617,673

Price reflects the maximum heated square footage for the plan and includes the cost of any room addition options shown

Learn More
about this plan
here:



CARIBBEAN COLLECTION

Square footage, options, and plan configurations may vary per project and are subject to change. Renderings and floorplans are artist's concepts and are subject to change.